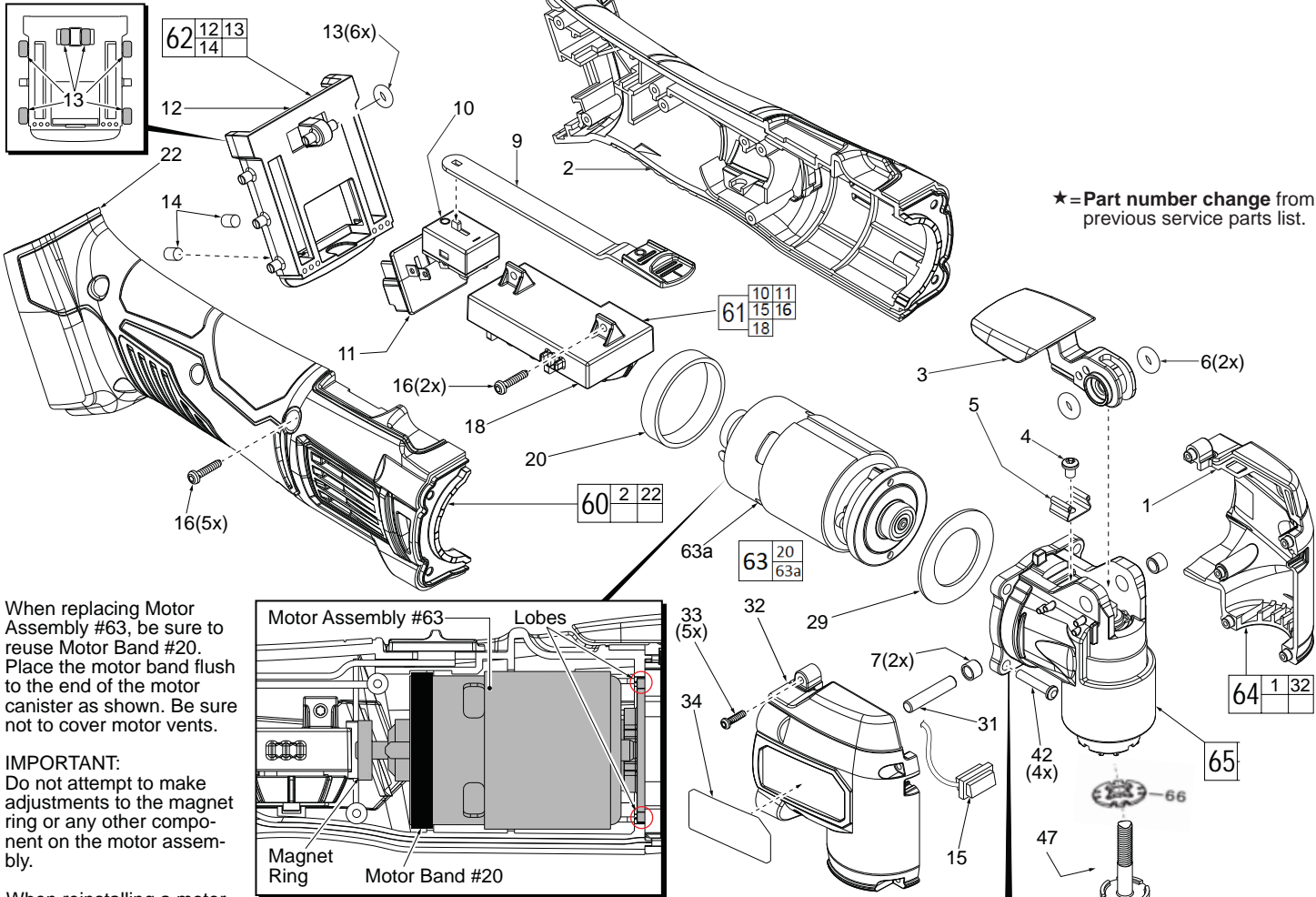




# SERVICE PARTS LIST

SPECIFY CATALOG NO. AND SERIAL NO. WHEN ORDERING PARTS		DATE Dec. 2013
<b>M18™ MULTI-TOOL</b>		WIRING INSTRUCTION <b>See Page Two</b>
MODEL NO. <b>M18BMT-0</b>	<b>2626-20</b>	

**EXAMPLE:**  
 00 0 Component Parts (Small #) Are Included  
 When Ordering The Assembly (Large #).

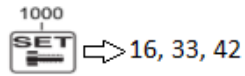
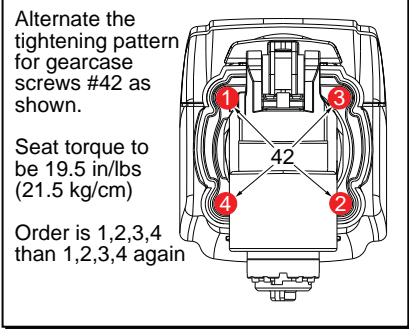
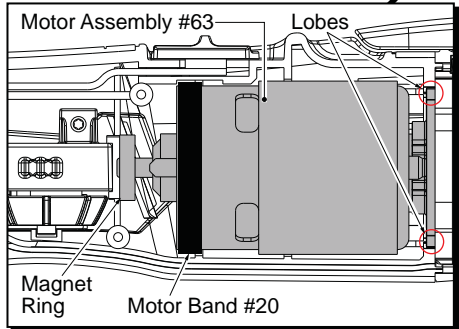


★ = Part number change from previous service parts list.

When replacing Motor Assembly #63, be sure to reuse Motor Band #20. Place the motor band flush to the end of the motor canister as shown. Be sure not to cover motor vents.

**IMPORTANT:**  
 Do not attempt to make adjustments to the magnet ring or any other component on the motor assembly.

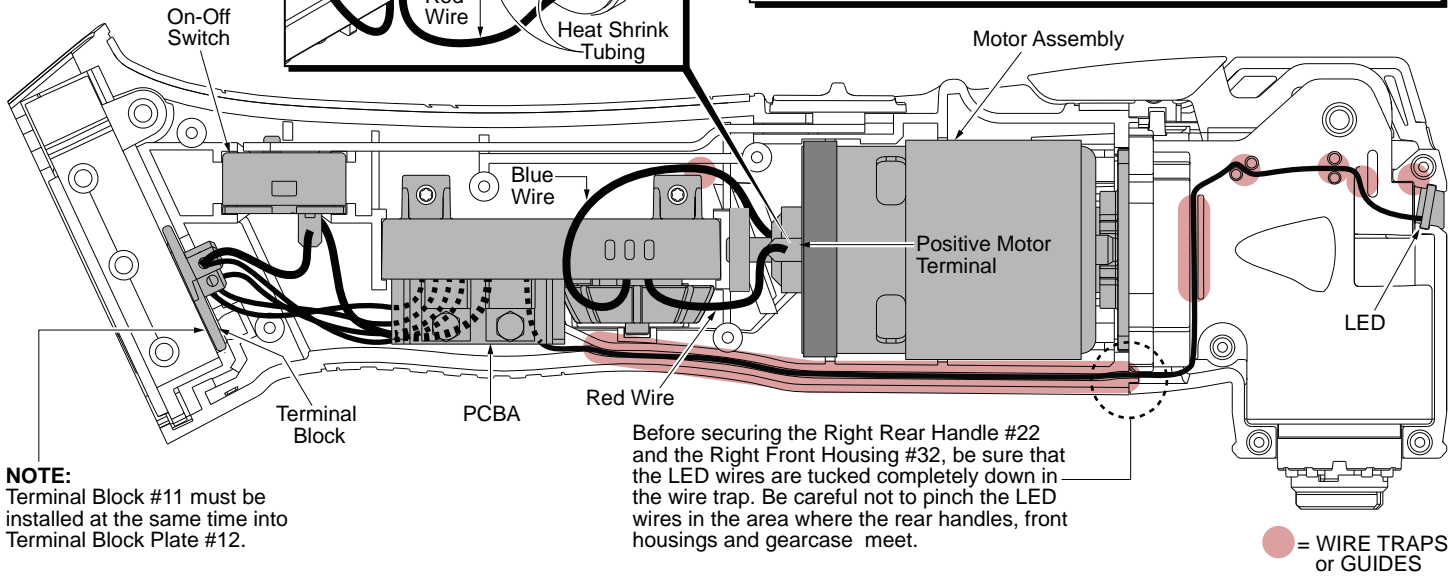
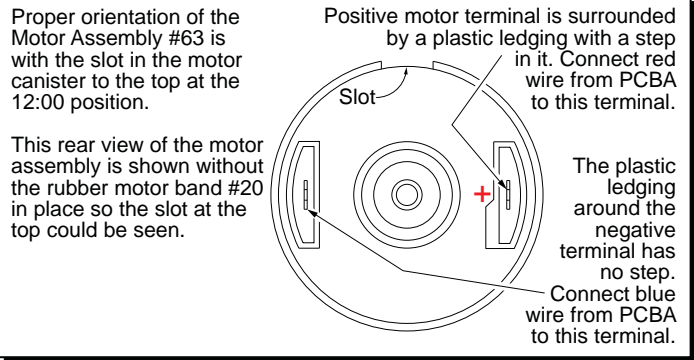
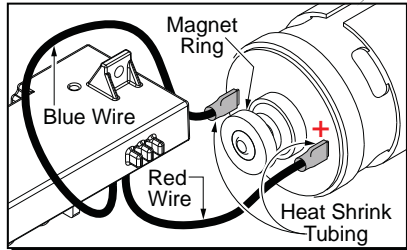
When reinstalling a motor assembly, be sure to orient the 'lobes' of the motor mount at the 12:00 and 6:00 position prior to placing the motor assembly in Left Rear Handle #2.



It is recommended to hand tighten Rear Handle Screws #16, PCBA Screws #16 and Front Housing Screws #33 to prevent over tightening. Exercise caution when tightening screws if a cordless driver drill is used.

**NOTE:**  
Route the blue wire (from the PCBA to the negative motor terminal) behind the PCBA screw lobe. Be sure to tuck the blue wire down into the rear handle as much as possible, away from the magnet ring of the motor assembly.

It is recommended to use heat shrink tubing over the soldered wires / motor terminals as shown.

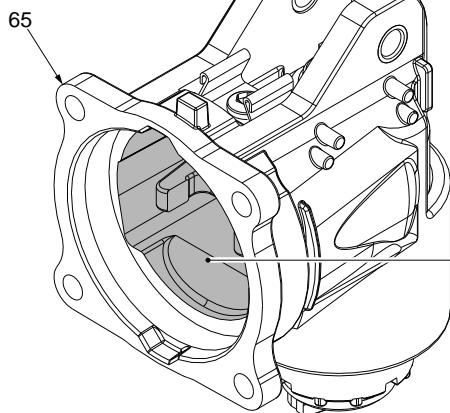
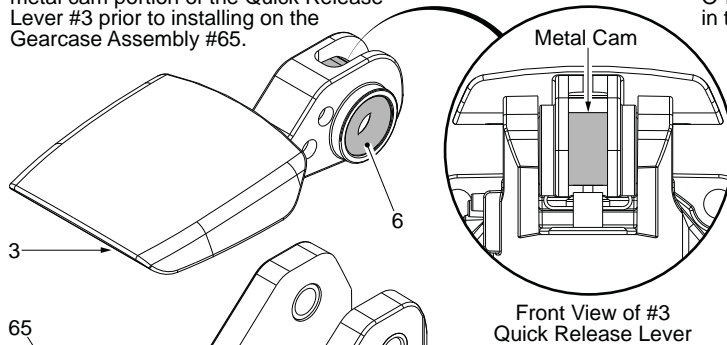


**LUBRICATION NOTES:**  
Use Type 'J' Grease, No. 49084220

When servicing, remove 90-95% of the existing grease prior to installing Type "J". Original grease maybe similar in color but not compatible with "J".

Place a light coating of grease on the metal cam portion of the Quick Release Lever #3 prior to installing on the Gearcase Assembly #65.

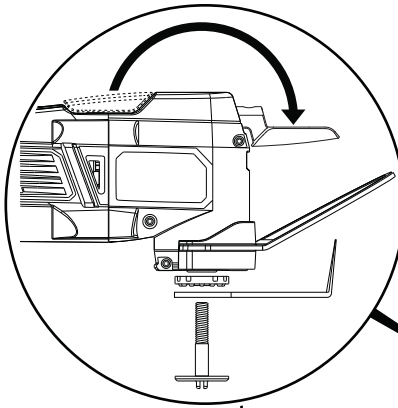
Place a light coating of grease on the O-Rings #6 (both sides) prior to installing in the Quick Release Lever #3.



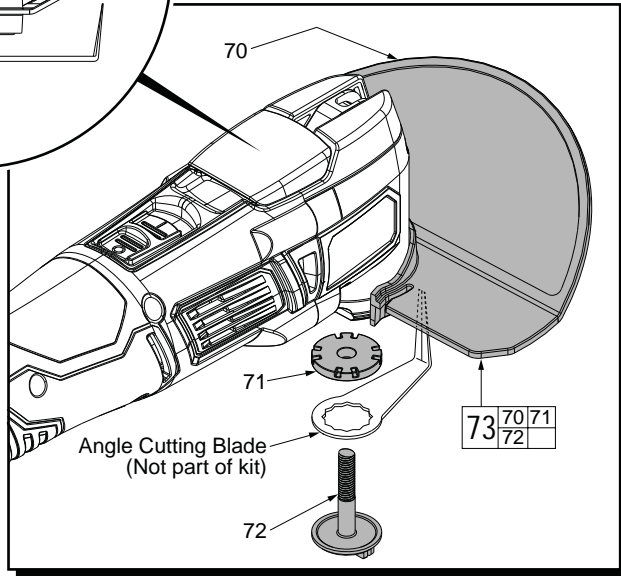
Place a light coating of grease on Metal Pin #31 prior to installing in the Gearcase Assembly #65.

31

Fill the inside cavity of Gearcase Assembly #65 with approximately .35oz. (10g) of grease.



**WARNING!**  
Always use blade installation guard when installing and removing angled blades. Blades are sharp and can cause injury.



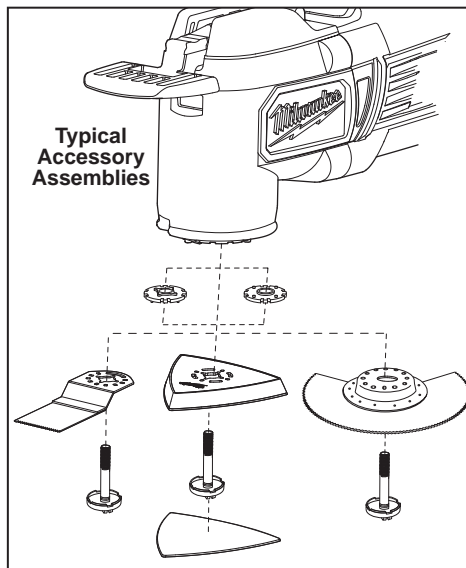
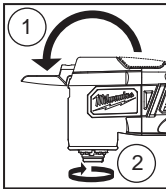
**ANGLE BLADE GUARD KIT** (Not a component of tool, sold separately)  
No. 14-32-0300

**Procedure to change cutting accessories:**

- 1). Remove the battery pack.
- 2). Snap the blade installation guard #70 over the neck of the tool, as shown.
- 3). Lift the quick release lever #3 and push it firmly forward over the detent.
- 4). Place the tool upside down on a flat surface.
- 5). Unscrew the accessory bolt #72.
- 6). Remove any accessories and adapter #71.

**Changing Accessories**

1. Remove the battery pack.
2. Lift the quick release lever and push it firmly forward over the detent.
3. Place the tool upside down on a flat surface.
4. Unscrew the accessory bolt.
5. Remove any accessories and adapter.
6. Clean bolt, flange, adapter and accessories of all dirt and debris.
7. Place the adapter (if necessary), accessory and bolt onto the tool. Determine the need for an adapter by using the chart. Hand tighten securely.
8. Press the quick release lever back into place.



Accessory Arbor Type	Use adapter with this side facing accessory
	adapter not needed
	adapter not needed
	adapter not needed
	adapter not needed

\* Adapter kit available as an accessory. Always use installation guard and accessory bolt provided with the kit when using these accessories.

